

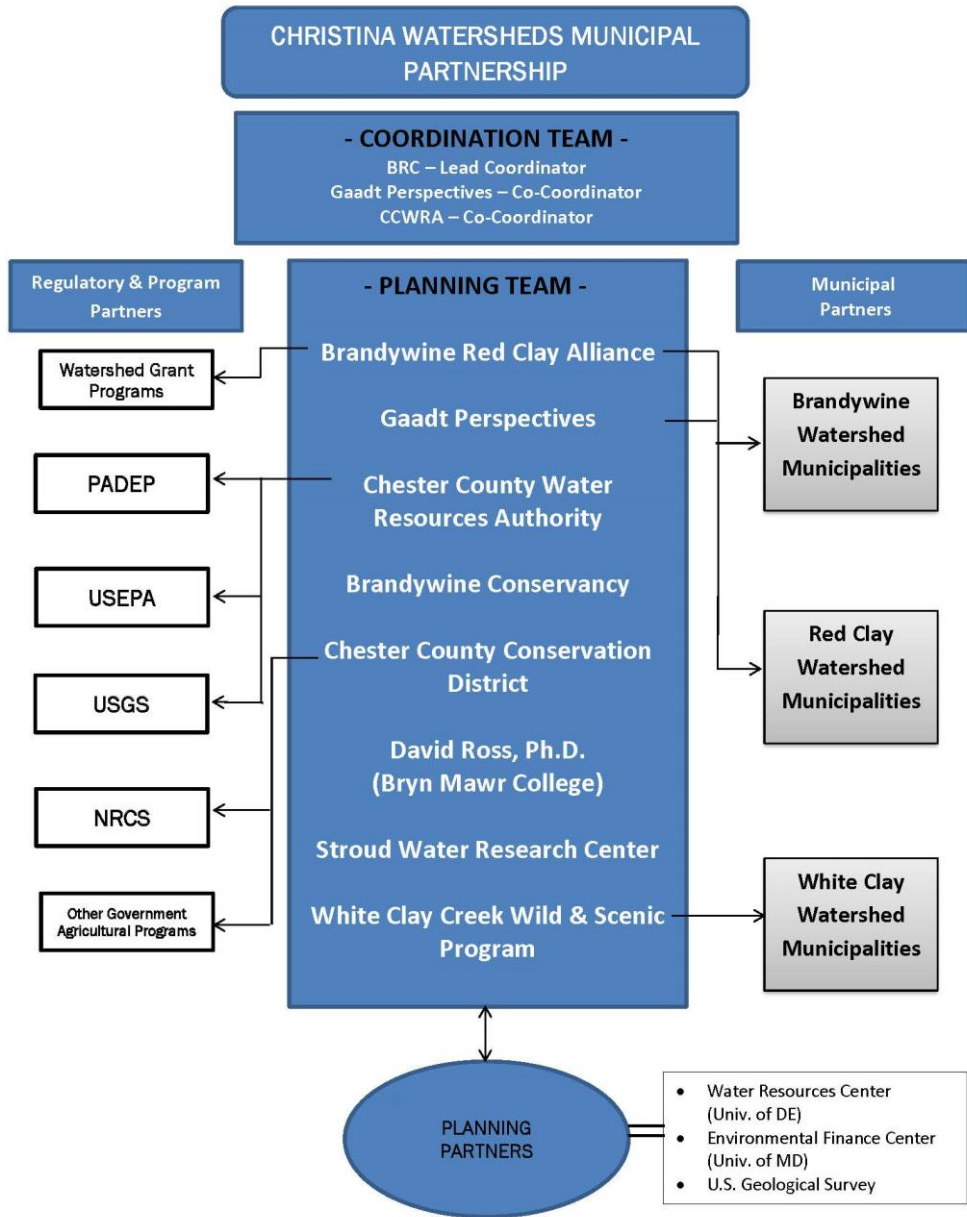
# Welcome to

Christina Watersheds Municipal Partnership  
Meeting

# CWMP Mission

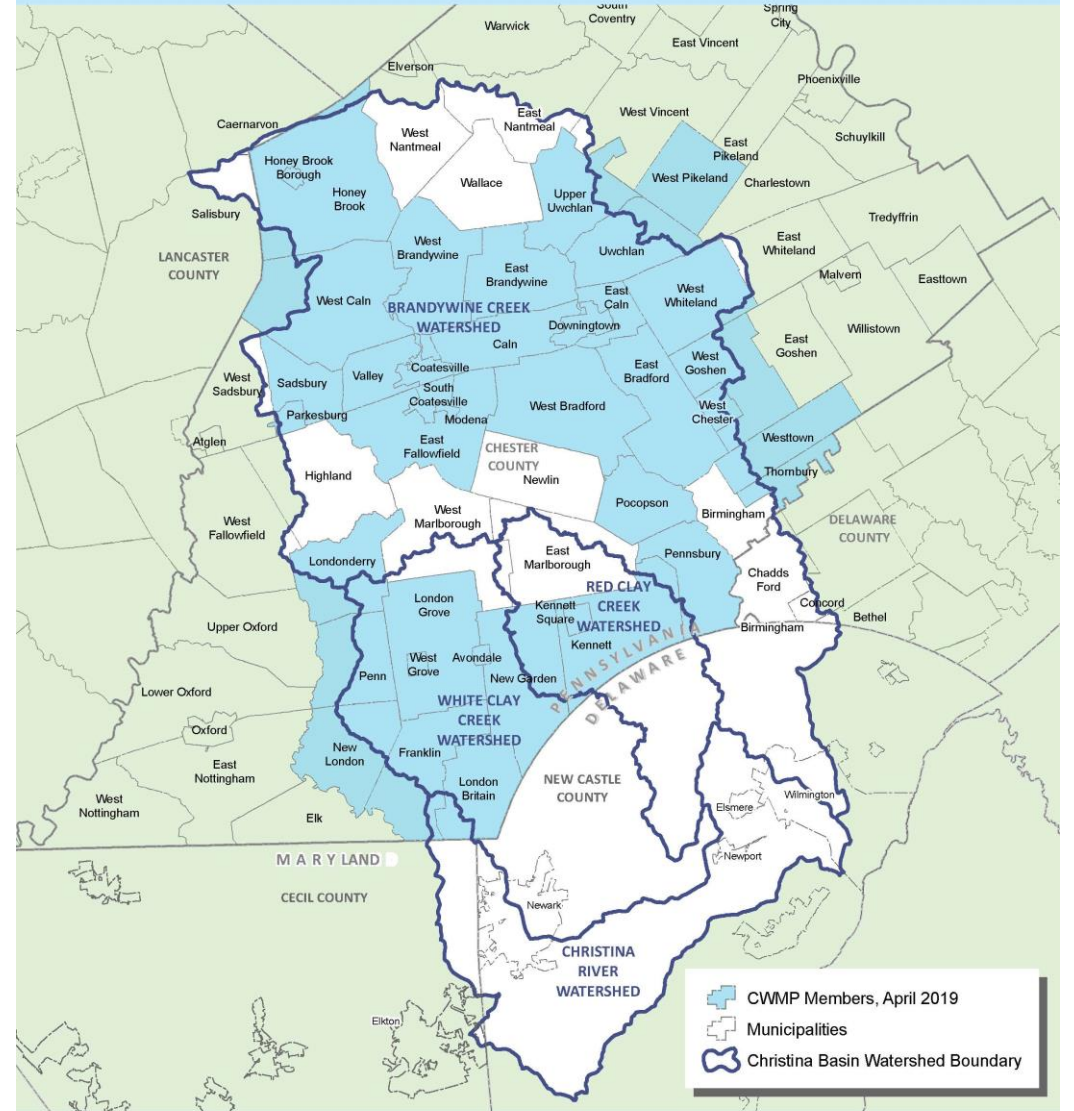
The Christina Watersheds Municipal Partnership (CWMP) is a long-term partnership of Pennsylvania municipalities, county agencies, and watershed conservation organizations.

*The mission of CWMP is to facilitate and support engagement and collaboration of Pennsylvania municipalities, landowners, and other stakeholders to restore and protect the water quality of streams in the Brandywine Creek, Red Clay Creek and White Clay Creek watersheds.*





## Christina Watersheds Municipal Partnership April 2019



Chester County Water Resources Authority  
April 23, 2019



# CWMP History- 2003-2020

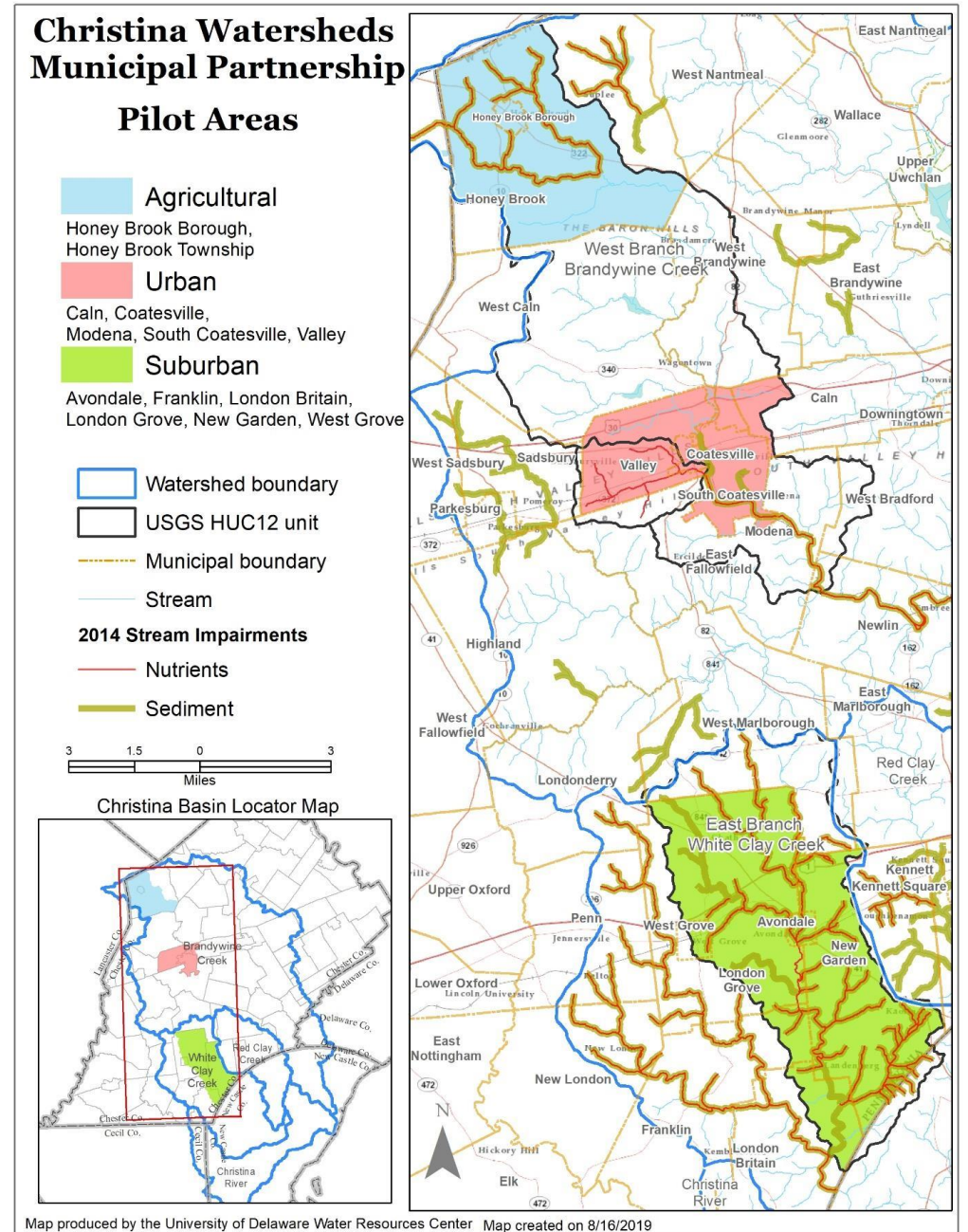
## Technical Assistance Accomplishments

- Christina TMDL Implementation Partnership CTIP (2003-2012).
- Developed a TMDL plan template for CWMP municipalities (2011-2012).
- Developed calculation methodologies for loading rates and reductions in TMDL plans (2016-2018).
- Served as a communication channel between municipalities and PADEP in the TMDL planning process (2010-2019).
- Completed land use loading rate calculations and an easy-to-use table to assist municipalities in determining their existing baseline pollutant load (2016-2017)
- Provided GIS land use layers from 1995 and 2012 to CWMP municipalities configured to allow direct comparison of land use between years for base line load calculations (2016-2017)
- Developed an easy-to-use spreadsheet Urban BMP Load Reduction Calculation Tool that mimicked the MapShed BMP editor tool (2017).
- Provided municipalities and consultants with a GIS map package with symbology to encourage standardized stormwater mapping across the watersheds (2017).

# • CWMP Pilot Areas

*Encouraging a collaborative approach and joint planning*

- Honey Brook- Ag Area
- Coatesville – Urban Area
- White Clay- Suburban Area
- CWMP is available to assist with other collaborations and joint plans



# Honey Brook Area Inter-governmental Agreement

- Agree to collaborate on:
  - BMP Implementation
  - BMP O&M
  - MS4 Permit Administration
- Steering Committee – 4 members (Engineers, Muni Reps)
- Cost-share – based on share of sediment load reduction
  - Township: 20%
  - Borough: 80%

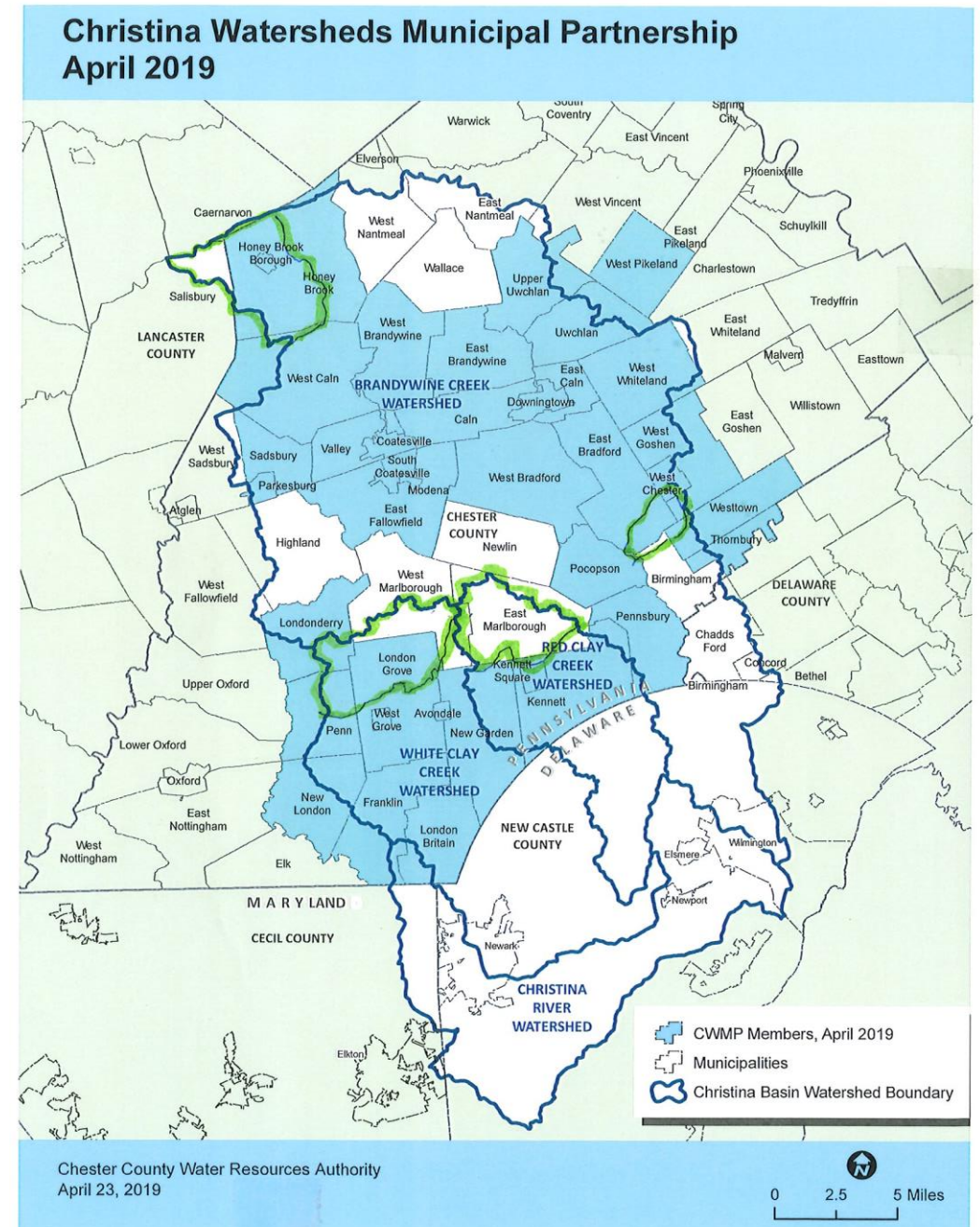






# William Penn Foundation Delaware River Watershed Initiative- DRWI Brandywine – Christina Cluster

- DRWI- Delaware River Watershed Focus- 4 States
- Initiated in 2014
- Brandywine Christina Cluster
- 4 Focus Areas:
  - Honey Brook Headwaters
  - Red Clay Headwaters
  - White Clay Headwaters
  - Plum Run
- Municipal Strategies-
  - Municipal Ordinance Assessment and Support
  - Educate and Engage Landowners and Municipalities
  - Promote and Implement Green Stormwater Practices
  - Clean Water Fund- TNC



# ***New and Improved CWMP Services- 2021- 2024***

- Sustainable CWMP Funding
- Continued MS4 Support
- Liaison to DEP
- Respond to Municipal and Focus Group Input
- Assist with Implementation of MS4 and PRP Plans
- Public Education, Outreach and Staff Training Resources and Annual Report



# ***New and Improved CWMP Services- 2021- 2024***

## **Annual CWMP Services**

- **Four CWMP Meetings annually**
  - Include presentations for staff training
  - One mtg/yr. dedicated to elected officials/staff
- **Two half-day workshops annually**
  - Help to meet MCM6, Staff Training
- **MS4 Requirement Support**
  - Annual Water Advertisement
  - CWMP MS4 Annual Report
  - Public Education and Outreach Opportunities



# ***New and Improved CWMP Services- 2021- 2024***

## **Annual CWMP Services**

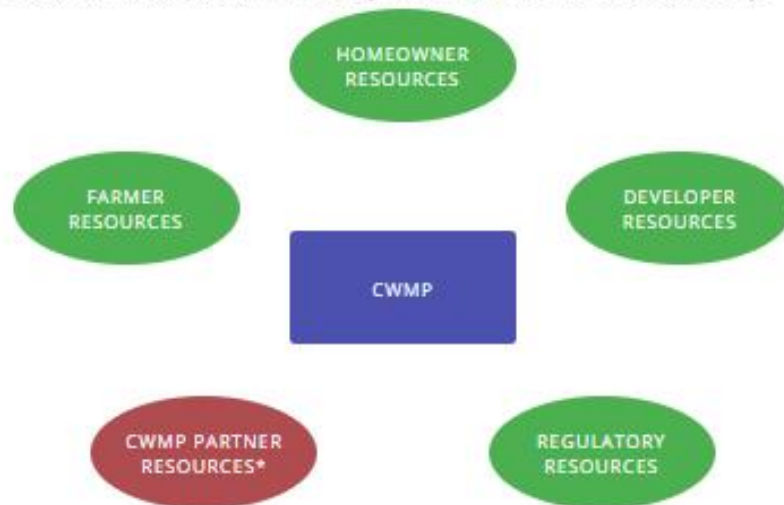
- **How Can CWMP Help Implement MS4 Plans?**
- **\$ Funding:**
  - As nonprofit and governmental organizations, CWMP Planning Team members can help access grant funding
- **Technical Assistance**
  - Expertise and Resources on Best Management Practices \*BMP's" and local examples
  - 88% of land is owned by private landowners, CWMP can help connect to BMP projects on private lands
- **Project Implementation:**
  - Connections to larger county, regional and watershed-wide initiatives and planning efforts
  - Assistance with BMP projects that meet these watershed-wide water quality goals and strategies





# Christina Watersheds Municipal Partnership

CWMP is a group of municipal and non-profit partners focused on developing strategies to address stormwater pollution in the Brandywine-Christina watersheds of Chester County.



\* Content restricted to CWMP partner municipalities.

October 2020						
Sun	Mon	Tue	Wed	Thu	Fri	Sat
27	28	29	30	Oct 1 8:30am	2	3
4	5	6	7	Open 5h	9	10
11	12	13	14	15	16	17
18	19	20	21	22 11:30am	23	24
25	26	27	28	29 4am-7h	30	31

[Full page calendar](#)

## About This Site

CWMP is a group of municipal and non-profit partners focused on developing strategies to address stormwater pollution in the Brandywine-Christina watersheds of Chester County.

## Log In

Username or Email Address

# Public Resources:

- Single on-line resource addressing MCM's 1 & 2
- CWMP will maintain website to keep it up to date
- Municipalities can post the [www.cwmp.org](http://www.cwmp.org) link on their stormwater web pages with the following description:  
*"Our municipality is participates in the Christina Watersheds Municipal Partnership (CWMP), for information and resources about stormwater and what you can do to improve stormwater go to [www.cwmp.org](http://www.cwmp.org)".*
- Provides general and detailed information
- Separate tabs for:
  - Homeowner Resources
  - Farmer Resources
  - Developer Resources
- CWMP Google Calendar
  - education and outreach activities,
  - can be linked directly to your municipal web page

**CWMP**  
SUPPORTING LOCAL STORMWATER PLANNING AND POLLUTION MANAGEMENT

Home About Public Resources Partner Resources CWMP Map Contact

## Christina Watersheds Municipal Partnership

CWMP is a group of municipal and non-profit partners focused on developing strategies to address stormwater pollution in the Brandywine-Christina watersheds of Chester County.

Homeowner Resources  
Farmer Resources  
Developer Resources  
CWMP  
CWMP Partner Resources\*  
Regulatory Resources

\* Content restricted to CWMP partner municipalities.

October 2020

Sun	Mon	Tue	Wed	Thu	Fri	Sat
27	28	29	30	Oct 1 Halloween	2	3
4	5	6	7	8 Thanksgiving	9	10
11	12	13	14	15	16	17
18	19	20	21	22 Thanksgiving	23	24
25	26	27	28	29	30	31

Full page calendar

### About This Site

CWMP is a group of municipal and non-profit partners focused on developing strategies to address stormwater pollution in the Brandywine-Christina watersheds of Chester County.

### Log In

Username or Email Address

**CWMP Municipal Resources:** password-protected targeted information to meet the needs of CWMP Partners.

- Stormwater Articles- can be cut and pasted into municipal newsletters and web pages, new articles posted quarterly.
- CWMP Google Discussion Group- active online discussion group for municipalities to post and share MS4 Stormwater related questions, information and resources
- MS4 Plan Status- interactive listing of progress on MS4 plans in the Christina Basin
- Web Map- shows Christina Basin and CWMP municipalities
- Grants and funding- lists of funding resources available to municipalities
- Stormwater Training- links to on-line training, (MCM 6) CWMP YouTube Channel of previous presentations and power points
- Quarterly CWMP electronic newsletter-with timely seasonal updates, new articles and information featured on CWMP.org and upcoming events.

The screenshot shows the CWMP website interface. At the top, the CWMP logo is displayed with the tagline "SUPPORTING LOCAL STORMWATER PLANNING AND POLLUTION MANAGEMENT". A navigation menu includes links for Home, About, Public Resources, Partner Resources, CWMP Map, and Contact. Below the navigation is a large banner image of a field with the text "Christina Watersheds Municipal Partnership".

The main content area features a central diagram with a blue box labeled "CWMP" in the center, surrounded by five green ovals: "HOMEOWNER RESOURCES", "FARMER RESOURCES", "DEVELOPER RESOURCES", "REGULATORY RESOURCES", and "CWMP PARTNER RESOURCES\*". The "CWMP PARTNER RESOURCES\*" oval is circled in red. Below the diagram is a note: "\* Content restricted to CWMP partner municipalities."

To the right of the diagram is a Google Calendar for October 2020. Below the calendar is a link for "Full page calendar".

At the bottom right, there is an "About This Site" section with a brief description of CWMP's mission. Below that is a "Log In" section with a text input field for "Username or Email Address" containing the name "brian".

**Regulatory Resources:** explains the MS4 program, in the context of other environmental laws and regulations, clarifies how these requirements apply to different groups.

- Page can be posted as a link on municipal websites “for information on stormwater regulations and how they may affect you and our municipality go to...”.
- Included in this page is general and detailed information on:
  - The Municipal Role: MS4 program
  - The Municipal Role: Stormwater Management Act (PA Act 167 of 1978)
  - The role and impact on residents, farmers, developers, waste-water and drinking water facilities.

**CWMP**  
SUPPORTING LOCAL STORMWATER PLANNING AND POLLUTION MANAGEMENT

Home About Public Resources Partner Resources CWMP Map Contact

## Christina Watersheds Municipal Partnership

CWMP is a group of municipal and non-profit partners focused on developing strategies to address stormwater pollution in the Brandywine-Christina watersheds of Chester County.

HOMEOWNER RESOURCES

FARMER RESOURCES

DEVELOPER RESOURCES

CWMP

CWMP PARTNER RESOURCES\*

REGULATORY RESOURCES

\* Content restricted to CWMP partner municipalities.

October 2020

Sun	Mon	Tue	Wed	Thu	Fri	Sat
27	28	29	30	Oct 1 HOLIDAY	2	3
4	5	6	7	8 Sun 5h	9	10
11	12	13	14	15	16	17
18	19	20	21	22 HOLIDAY	23	24
25	26	27	28	29	30	31

Full page calendar

### About This Site

CWMP is a group of municipal and non-profit partners focused on developing strategies to address stormwater pollution in the Brandywine-Christina watersheds of Chester County.

### Log In

Username or Email Address



# Live Screen Share CWMP.org

**CWMP**  
SUPPORTING LOCAL STORMWATER PLANNING AND POLLUTION MANAGEMENT

[Home](#) [About](#) [Public Resources](#) [Partner Resources](#) [CWMP Map](#) [Contact](#)

## Christina Watersheds Municipal Partnership

CWMP is a group of municipal and non-profit partners focused on developing strategies to address stormwater pollution in the Brandywine-Christina watersheds of Chester County.

**HOMEOWNER RESOURCES**

**FARMER RESOURCES**

**DEVELOPER RESOURCES**

**CWMP**

**CWMP PARTNER RESOURCES\***

**REGULATORY RESOURCES**

\* Content restricted to CWMP partner municipalities.

October 2020

Sun	Mon	Tue	Wed	Thu	Fri	Sat
27	28	29	30	Oct 1 8:30am	2	3
4	5	6	7	8 Open St.	9	10
11	12	13	14	15	16	17
18	19	20	21	22 11:30am	23	24
25	26	27	28	29	30	31

[Full page calendar](#)

### About This Site

CWMP is a group of municipal and non-profit partners focused on developing strategies to address stormwater pollution in the Brandywine-Christina watersheds of Chester County.

### Log In

Username or Email Address

# *Building a Sustainable Funding Source*

## **Proposed 2021-2024 Annual Budget and Funding:**

- Over the years, municipalities have paid as much as \$1,000/year for CWMP services and special projects
- Grants from William Penn Foundation and others have covered special projects

### Projected Costs and Funding 2021 - 2024

- \$53,690/yr.- Total costs to operate CWMP
- \$17,270/yr.- William Penn Foundation Funding provided to CWMP Planning Team Organizations
- Over \$18,000/yr. - In-kind contribution of staff time from Planning Team members
- Proposed \$23,480/yr. municipal funding with annual partnership fees:
  - \$450/year for municipalities with annual budget expenses <\$1M
  - \$700/year for municipalities with annual budget expenses \$1M - \$2M
  - \$950/year for municipalities with annual budget expenses > \$2M

## ***Building a Sustainable Funding Source***

- ✓ Proposed fee **combines** the current annual fee paid to Brandywine Red Clay Alliance (BRC) for MS4 Public Education, Annual Stormwater Advertisement and MS4 Annual Report, (\$200 -\$450/year) into a single partnership fee that includes all New and Improved Services of CWMP
- ✓ BRC will continue to provide fiscal management including invoicing & accounts payable
- ✓ Annual Partnership fee will be invoiced in January for services during the calendar year.
- ✓ Annual partnership fee includes all municipal staff, elected officials and engineers/consultants

### **CWMP Municipal partnership entitles members-only to:**

- CWMP Member Resources via password protected section of CWMP.org,
- Shareable links and resources on CWMP.org for Homeowner, Agricultural and Developer Resources, CWMP Calendar, Stormwater Articles, and Stormwater Regulations
- Participation in quarterly meetings (4) and annual workshops (2)
- CWMP quarterly newsletters
- Technical assistance and liaison to PADEP regarding MS4 Plans and regulations
- CWMP Hosted Google Discussion Group
- Annual Stormwater Advertisement and CWMP Annual MS4 Report

## *Building a Sustainable Funding Source*

- Value of CWMP Shared Services:
  - CWMP.org website development (\$5,000 - \$10,000 value)
  - CWMP.org website annual maintenance @ \$75/hr x 10 = \$750
  - Annual Water Advertisement = \$450/yr.
  - Two, half day workshops/year @ \$50 each x 2 = \$100
  - TOTAL Annual Services Value= \$1,300
- Technical Assistance, Google Groups, Liaison to DEP= *Priceless!*

# New and Improved CWMP Services- 2021- 2024

- Questions and Answers
- CWMP contact:
  - Brian Winslow
  - Brandywine Red Clay Alliance
  - [bwinslow@brandywineredclay.org](mailto:bwinslow@brandywineredclay.org)
  - 610-793-1090